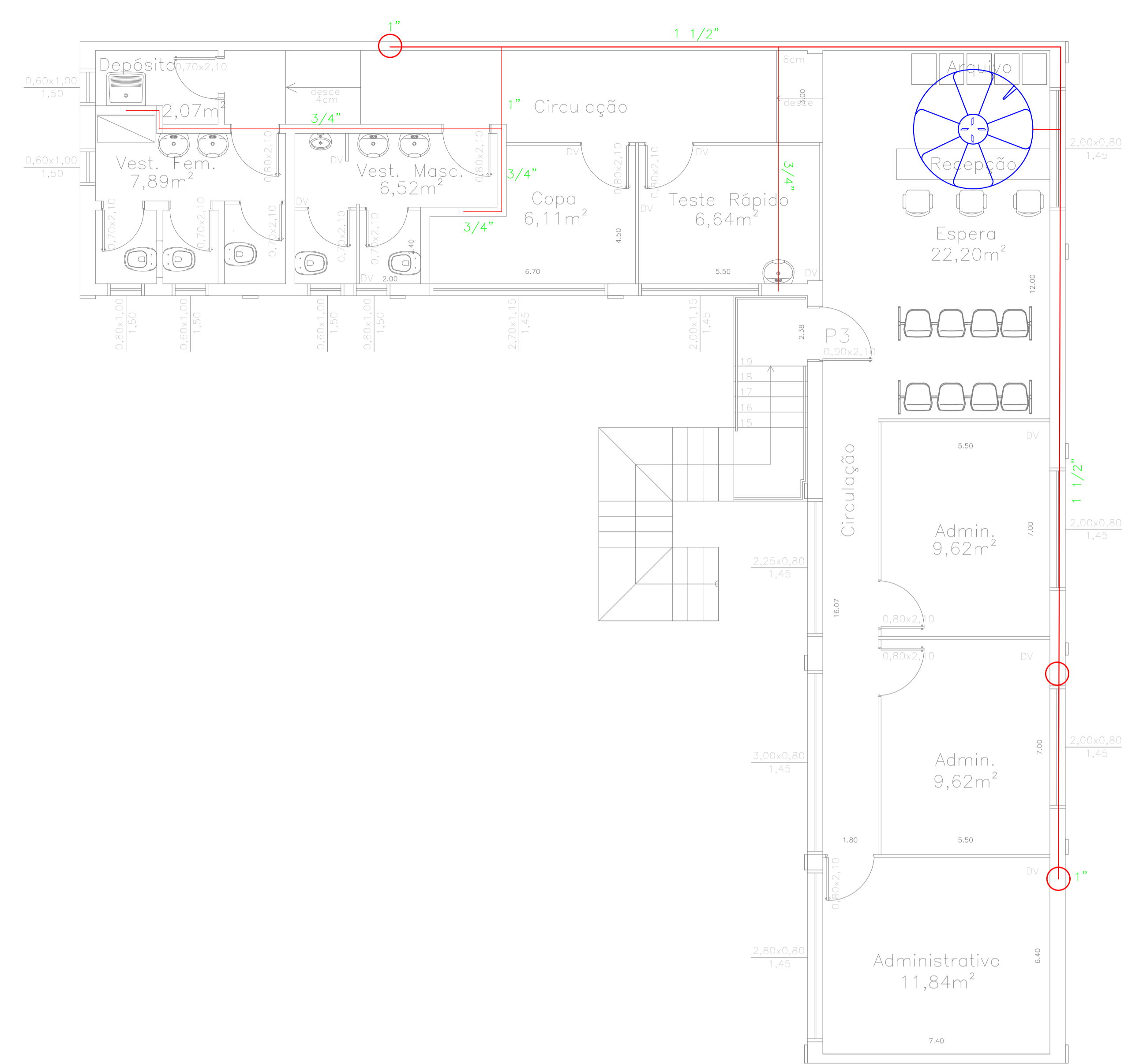
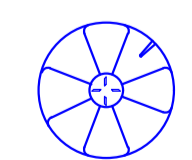







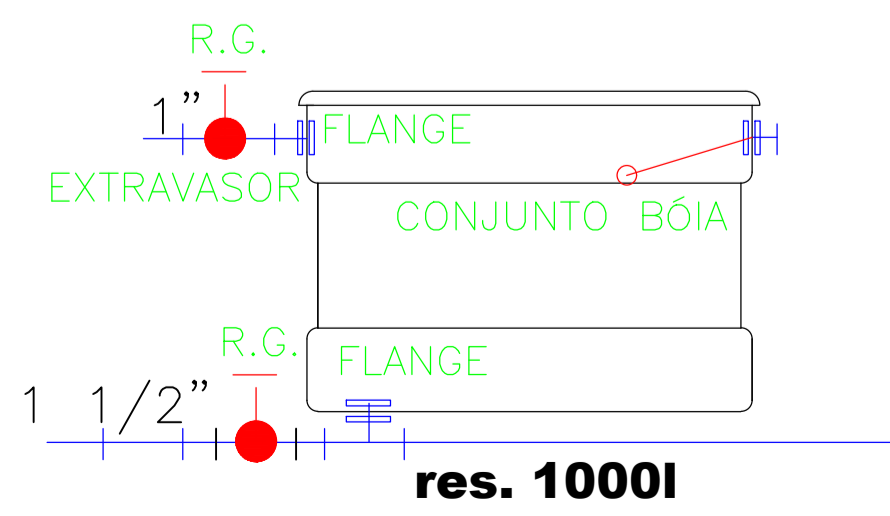
PLANTA - PAV. TÉRREO
esc 1:50



PLANTA - PAV. SUPERIOR
esc 1:50

LEGENDA

-  Reservatório 1000L
-  Barrilete 1/1/2"
-  Barrilete 1"
-  Tubo de queda 1"
-  Distribuição de água Térreo
-  distribuição de água Pav. Superior



SECRETARIA DE PLANEJAMENTO E OBRAS		Escala	
Assunto: Ampliação e Readequação do Posto de Saúde Nova Cruzeiro		Indicada	
Obra / Título: Projeto Água Fria		Arq. José Luiz Rival Pampaloni Resp. Técnico pelo Projeto	
Local: R. Capitão Neco,		Paulo César Félix Junior Gestor Técnico do Projeto	
Nota:		Prefeitura Municipal	
Data: 31.10.2019		Thales Gabriel Fonseca Prefeito Municipal	
Área: Desenho		Secretaria de Planejamento e Obras	
Folha: E-01		Paulo César Félix Junior Secretário Municipal	

